

---

## Air Techniques Accent Sensor Digital Integration

---

1. **Please review all installation instructions before beginning the installation.**  
For Eaglesoft there should be a separate CD labeled *Eaglesoft Digital Integration*. (For Patterson Imaging users the Digital Integration is on the same CD as the software installation).
2. **Close all running programs.**
3. **Make a backup** (same as daily backup).
4. **Log on as the Administrator.**
5. **Insert the CD into the CD-ROM drive.** The following installation window should automatically appear. (If using Patterson Imaging, select the **Install Digital Integration** option and the window below should appear).

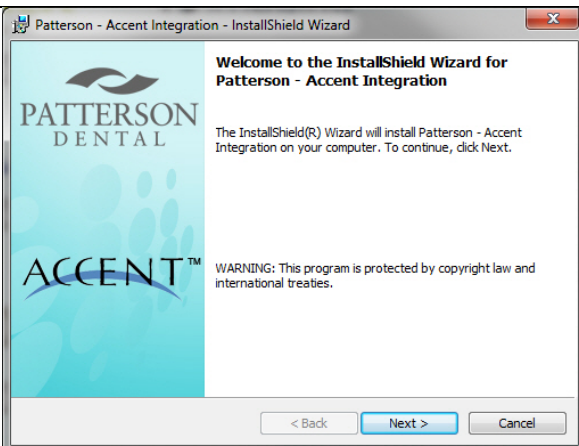
---

**Important: Install the integration only on the machine(s) that will utilize the Accent sensor.**

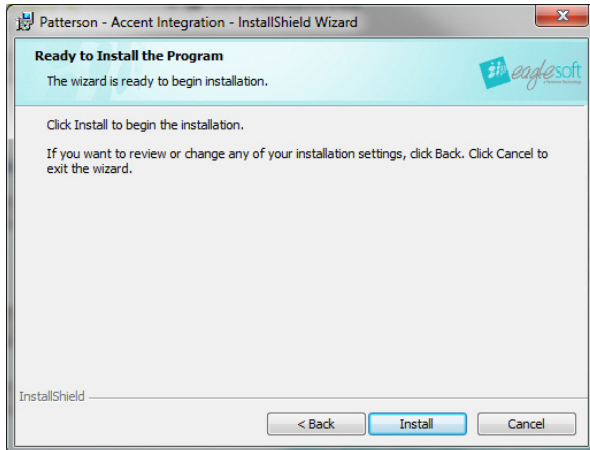
---



6. Under Air Techniques, click **Accent Sensor**.

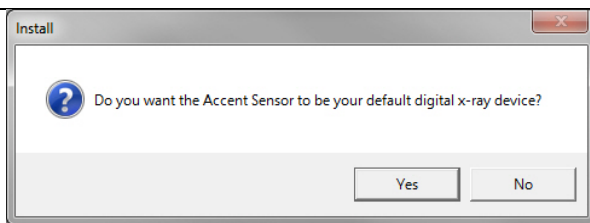


7. Click **Next**.



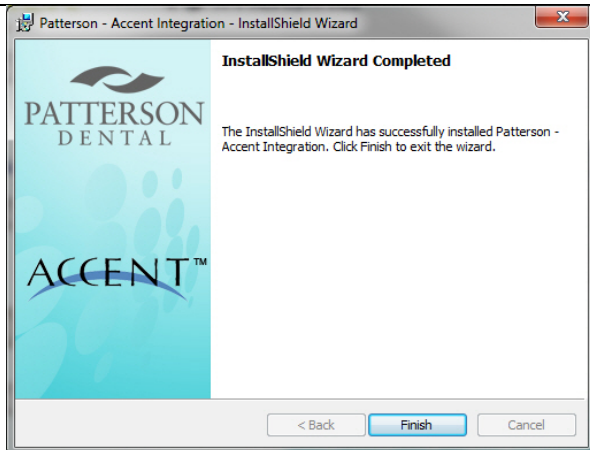
8. Click **Install**.

---



9. Click **Yes**.

---



10. Select **Finish**.

---